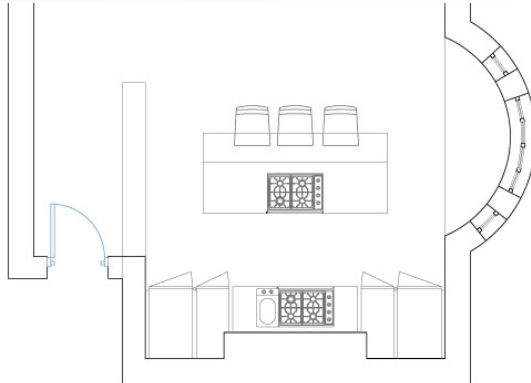


FLAT 3 : 35 KENSINGTON COURT

KITCHEN JOINERY OPTIONS

KENSINGTON COURT

KITCHEN - OPTION 3 (RR)



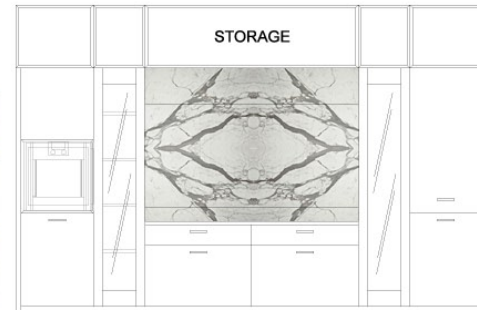
Description:

- Total length 410 cm work top 185cm.
- Island dimensions 250 x 110 cm

Equipped with :

- n. 1 Frige/freeze
- n. 1 Cooltop 4 gas
- n. 1 Teppan yaki
- n. 1 Big wine cellar
- n. 1 Dishwasher
- n. 1 Oven
- n. 1 Hood

All low unit are equipped with drawers (small and big size) except for dishwasher a side of the ove ther is a column with glass door and shelves inside, and lights, matching with the wine cooler a side of the fridge.



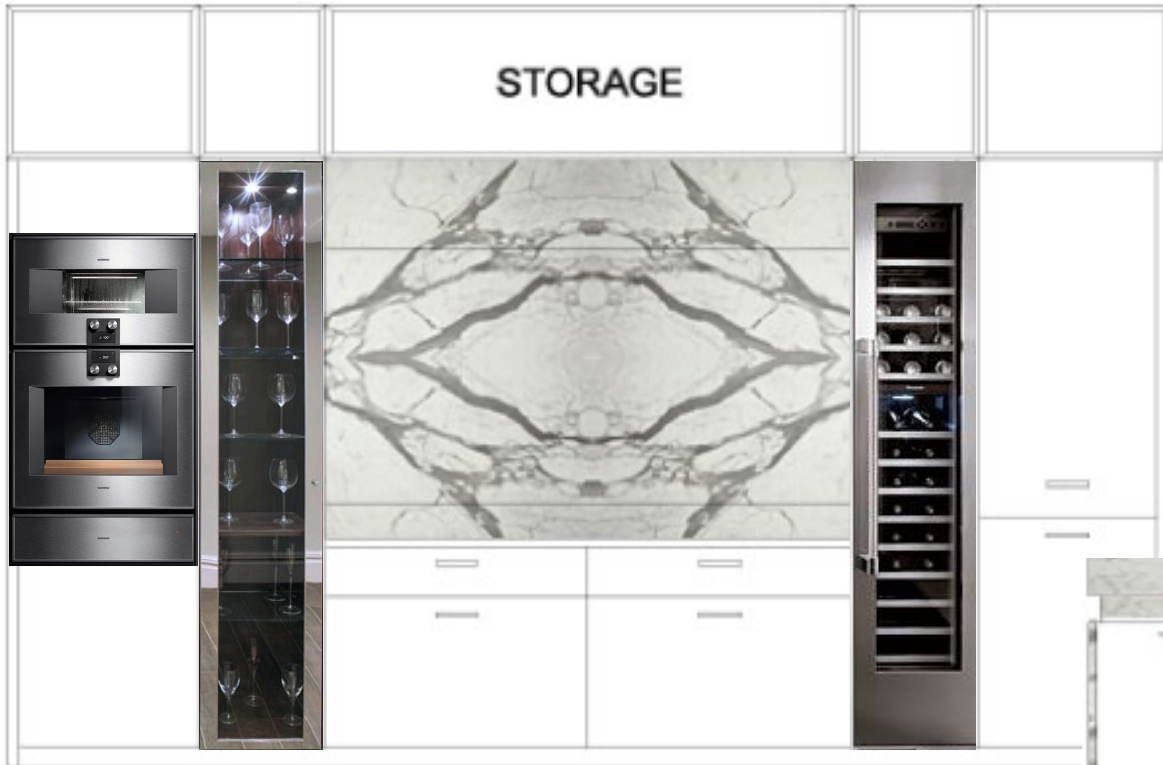
Option 3



INITIAL CONCEPT ONLY
further development required

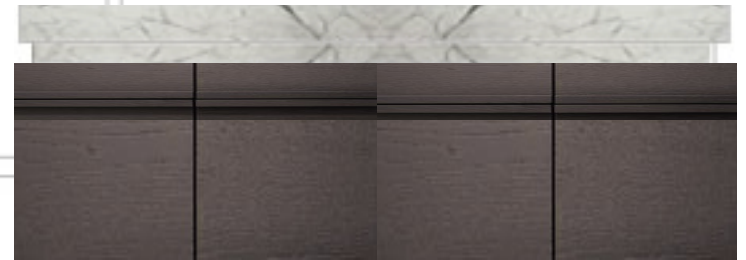
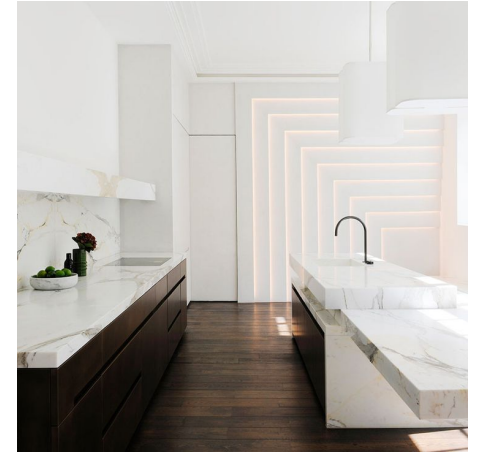
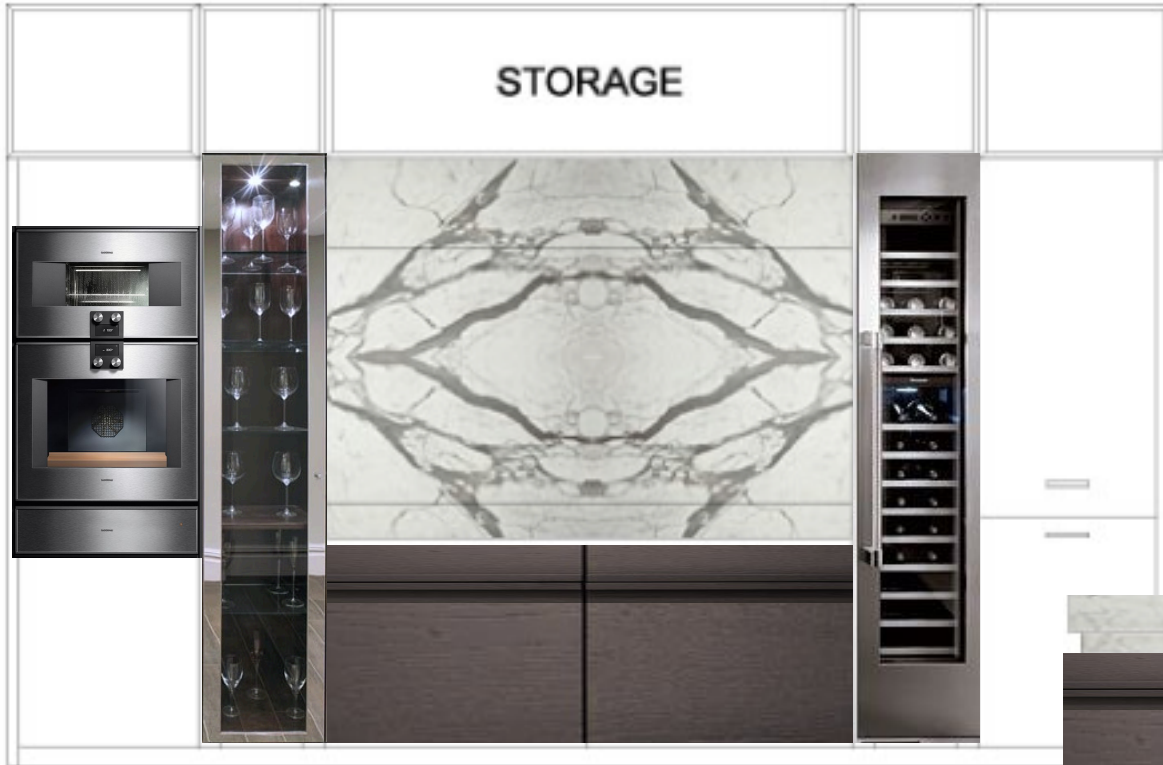
KENSINGTON COURT

KITCHEN JOINERY : WHITE



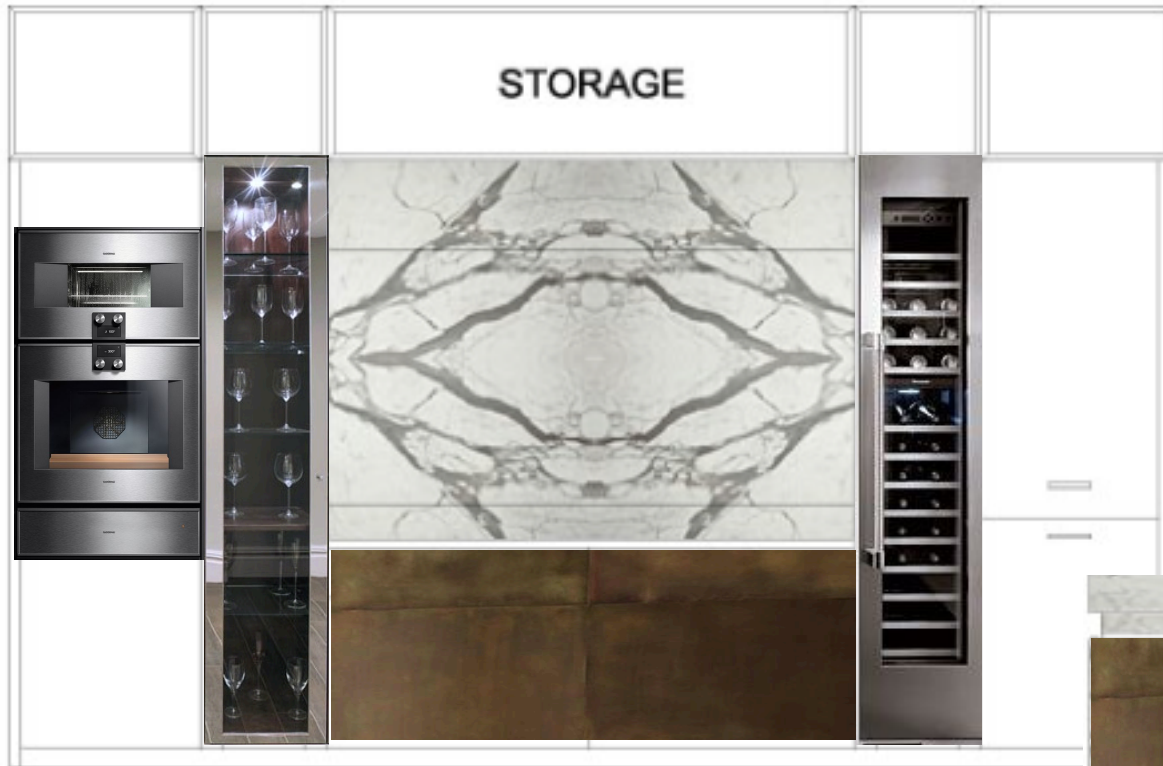
KENSINGTON COURT

KITCHEN JOINERY : DARK OAK - LOW UNITS ONLY

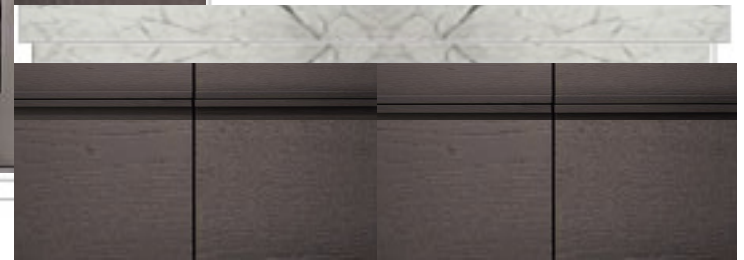
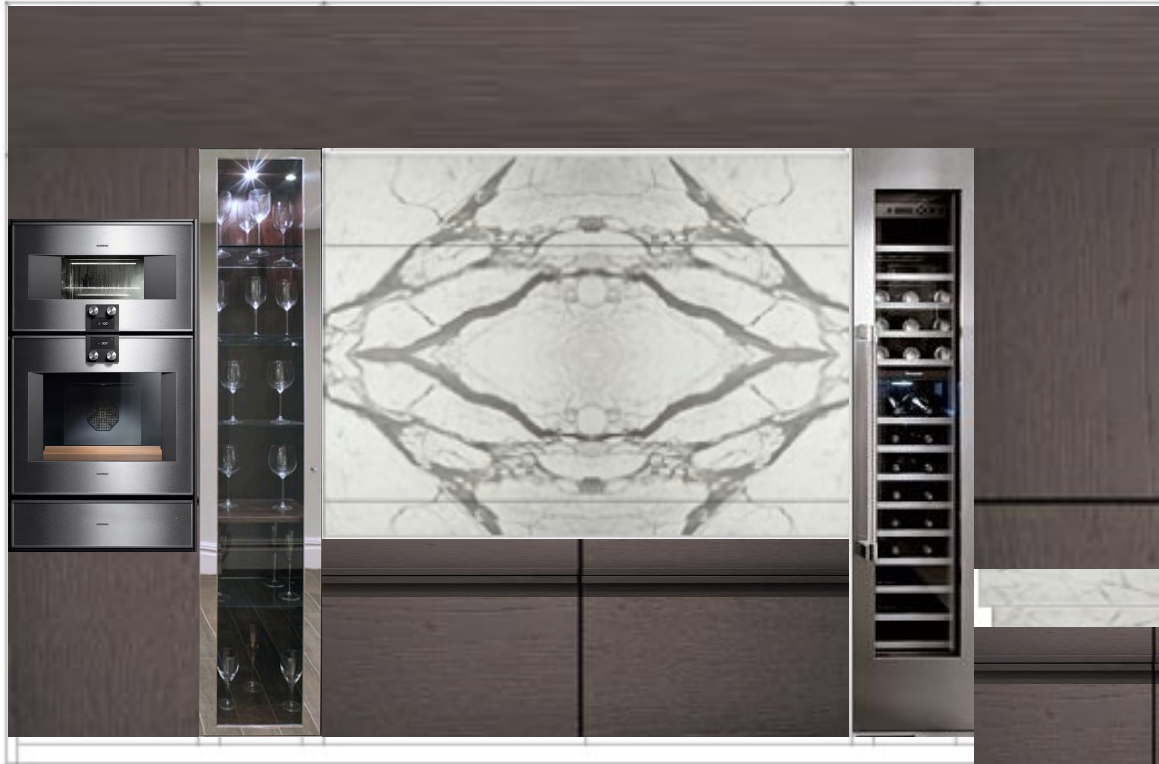


KENSINGTON COURT

KITCHEN JOINERY : PATINATED COPPER LOW UNITS ONLY



KENSINGTON COURT
KITCHEN JOINERY : DARK OAK



KENSINGTON COURT

KITCHEN JOINERY - LOW UNITS - HANDLE DETAIL



KENSINGTON COURT

KITCHEN - TAP



SIMPLE STAINLESS TAP
BY FRANKE WITH
LEVER MIXER



ZIP TAP

KENSINGTON COURT

KITCHEN - EXTRACT

